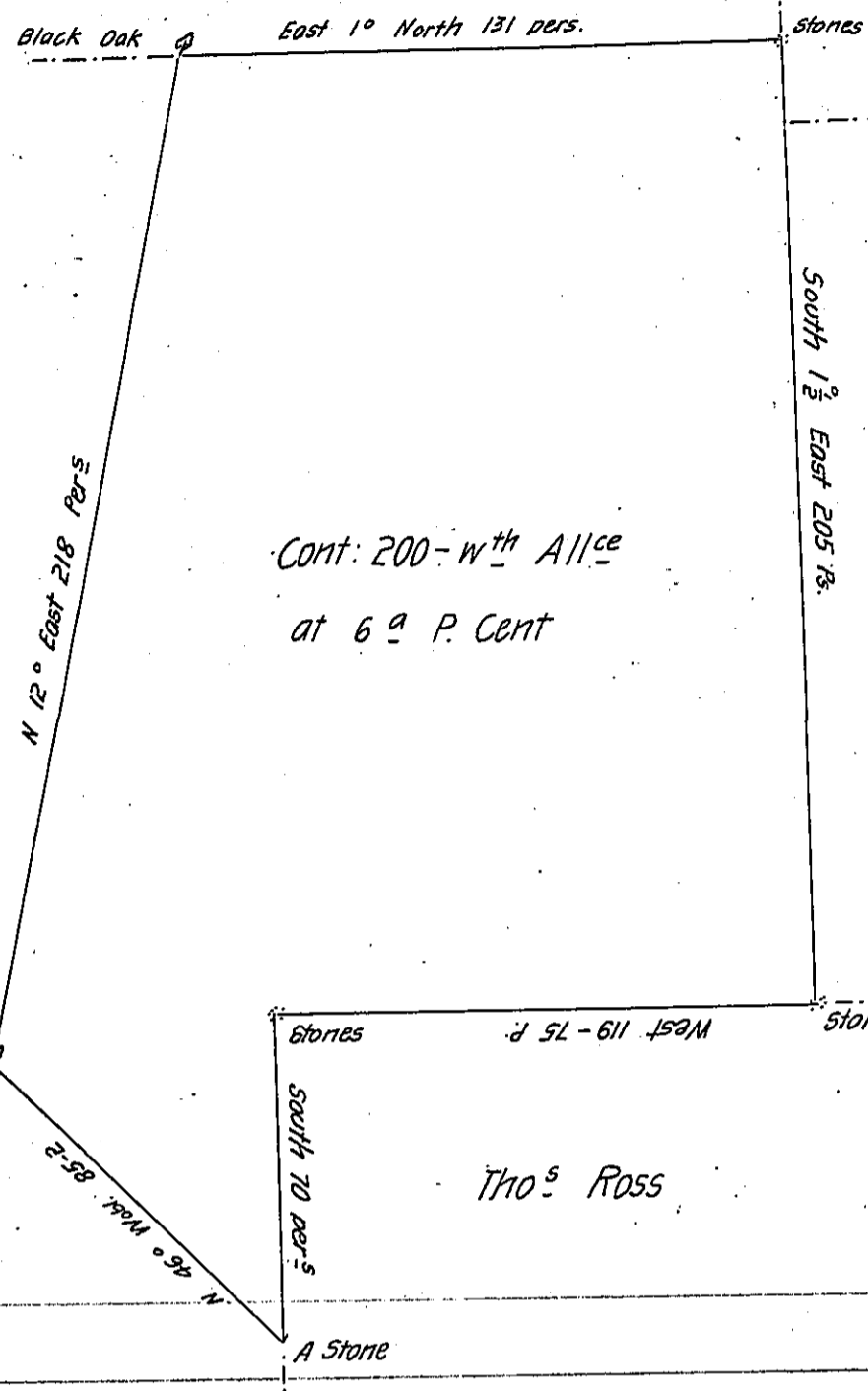


FORM NO. 1.

Ld in Tenure of Jm^o Garretson

Tho^s Phillips

Land surveyed to Geo. Ely



Cont: 200 - wth All^{ce} at 6^a P. Cent

Late of Thomas humphreys Dec^d

Will^m Blackfan

Tho^s Ross

A Draught of 200^a of Land Situate in the Township of Solebury in Bucks County Surveyed to Thomas Ross in Virtue of an Order from Richard Peters Esq^r of the 31st day of July 1751 for the use of the Proprietaries Dat^d the 26th of March 1754

P-

John Watson Jun^r -

IN TESTIMONY that the above is a copy of the original remaining on file in the Department of Internal Affairs of Pennsylvania, made conformably to an Act of Assembly approved the 16th day of February, 1833, I have hereunto set my Hand and caused the Seal of said Department to be affixed at Harrisburg, this twenty sixth day of June 1906

Loac P. Brown
Secretary of Internal Affairs.